

**APPROVAL OF SCHEMATIC DESIGN FOR
UPPER FIELDS RECREATION AND ATHLETIC COMPLEX**

A Recommendation

1. **Division and Department:** Student Affairs and Enrollment Management, Intercollegiate Athletics, and Finance and Administration

2. **Introduction:** The Oakland University Physical Master Plan 2001 to 2020 addresses the need to expand outdoor recreational and athletic facilities to meet student enrollment growth and Division I athletic programs. It stipulates that outdoor recreation fields have deteriorated and Division I programs lack adequate outdoor competition space. Oakland currently has 25 club sports and growing student participation in outdoor intramurals such as soccer and flag football. Revitalized upper play fields will accommodate the growing need for field space to host a variety of student-centered programs and services and serve the needs of more residential students. Moreover, several years ago, the University began competition in Women's Intercollegiate Tennis, and Men's and Women's Intercollegiate Track and Field. However, the University must rent fields and facilities at local high schools and private clubs to accommodate the practice and competition needs of these varsity programs.

In 2009, Campus Recreation and the Department of Athletics commissioned Grissim Metz, landscape architects, to provide preliminary designs to improve the upper fields in order to address problems identified in the Physical Master Plan and to acknowledge anticipated growth of the residential population. Improved fields, the addition of eight tennis courts and a track and field complex on the upper fields are included in the design (Attachment A) which will meet Division I competition requirements and serve to attract higher-caliber student athletes. Field renovations will also serve the fitness and recreational needs of the campus community and engage outside community members in the life of the University.

Based on a thorough review and evaluation by Campus Recreation, Athletics, and Facilities Management, it is recommended that the University seek proposals for architectural, engineering and construction management services (Professional Services) for the Upper Fields Recreation and Athletic Complex (Upper Fields) to be completed by Fall, 2014 with a total cost not to exceed \$7,850,000.

The project will be financed exclusively with proceeds from the sale of General Revenue Bonds.

Per the Board of Trustees' (Board) Contracting and Employment Appointment Authority Policy, "for any capital improvement project that has major aesthetic considerations, the Administration shall obtain Board approval of the schematic design." Board approval of the attached Upper Fields schematic design is requested.

**Approval of Schematic Design for
Upper Fields Recreation and Athletic Complex
Oakland University
Board of Trustees Formal Session
February 12, 2013
Page 2**

Upon Board approval of the schematic design, the Administration will proceed to seek proposals for Professional Services for this project and seek further Board approvals as required.

3. **Previous Board Action:** None.

4. **Budget Implications:** Beginning in FY2014, upon Board approval, debt service on the Upper Fields will be budgeted annually in the University general fund operating budget. The Department of Campus Recreation and Department of Athletics will include increased costs for equipment, maintenance and utilities in their respective annual budgets that are approved by the Board.

5. **Educational Implications:** The new complex will be attractive to prospective student athlete recruits and promote greater student involvement in outdoor intramural and fitness programs and facilities. Student recreation and athletic involvement is associated with higher grade point averages and many other physical, wellness, and intellectual benefits.

6. **Personnel Implications:** Administrative oversight of the complex will be integrated into the management and operational infrastructure of the existing Department of Campus Recreation. All intercollegiate practice and competition use of the complex will be coordinated by Campus Recreation and the Department of Athletics.

7. **University Reviews/Approvals:** This recommendation was formulated by the Director of Campus Recreation and Director of Athletics and reviewed by Student Leadership, the Dean of Students, Associate Vice President for Facilities Management, Vice President for Student Affairs and Enrollment Management, Vice President for Finance and Administration, and President.

8. **Recommendation:**


RESOLVED, that the Board of Trustees approves the schematic design for the Upper Fields Recreation and Athletic Complex (Attachment A, as may be immaterially amended during continuing design and construction phases of the project) at a not to exceed cost of \$7,850,000; and, be it further

RESOLVED, that the Board of Trustees authorizes the Vice President for Finance and Administration to proceed with the completion of design of the Upper Fields Recreation and Athletic Complex, and perform all acts and deeds required by this resolution, consistent with the project scope and schematic design.

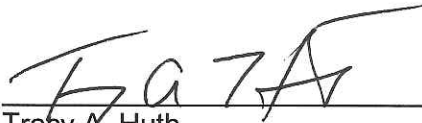
Approval of Schematic Design for
Upper Fields Recreation and Athletic Complex
Oakland University
Board of Trustees Formal Session
February 12, 2013
Page 3

9. Attachments: A. Upper Fields Recreation and Athletic Complex Schematic Design

Submitted to the President
on 2/6, 2013 by



Mary Beth Snyder
Vice President for Student Affairs
and Enrollment Management



Tracy A. Huth
Athletics Director

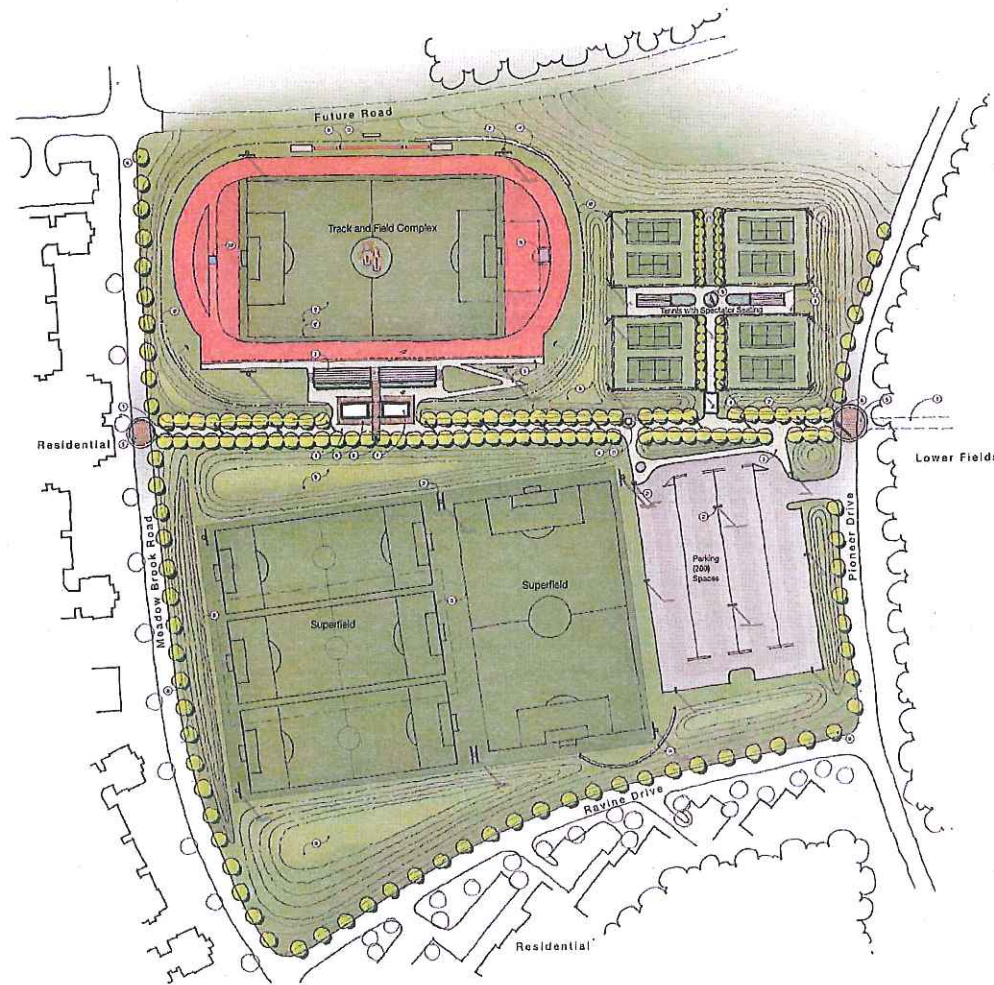


John W. Beaghan
Vice President for Finance and Administration
and Treasurer to the Board of Trustees

Recommended on 2/7, 2013
to the Board for approval by



Gary D. Russi
President



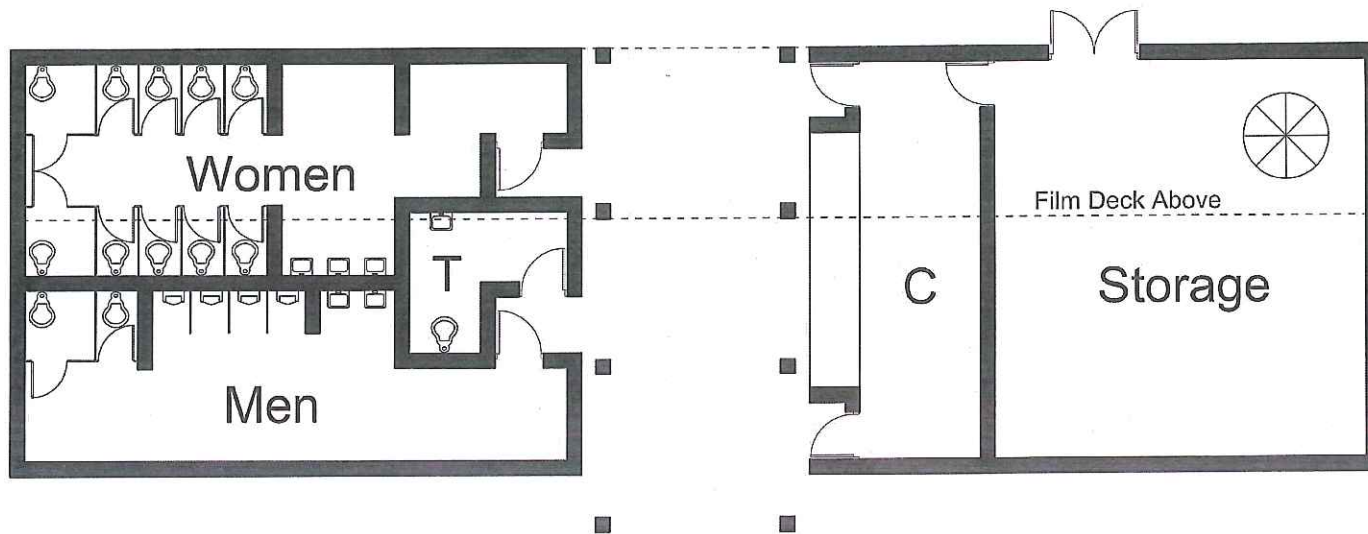
Key Notes:

- 1 Residence Concessions Building
- 2 Entrance Siding
- 3 Concrete Pavement
- 4 Grade Structure
- 5 Special Paving
- 6 Ball Identity Icon
- 7 Ball Identity Icon
- 8 Grassy Sculpture
- 9 Ball Tennis Identity Icon
- 10 Perimeter Fencing
- 11 Future Walkways to Lower Fields
- 12 Synthetic Turf
- 13 Scoreboard
- 14 Receiving Wall
- 15 Barricade
- 16 Grade Trees
- 17 Ticket Booth
- 18 Kicking Long Jump
- 19 High Jump
- 20 Slope's Grass
- 21 Site Lighting, L.P.N.









OU Upper Fields - Support Building

JANUARY 5, 2012

