

**APPROVAL OF SCHEMATIC DESIGN  
FOR THE P-32 PARKING STRUCTURE**

**A Recommendation**

1. **Division and Department:** Finance and Administration, Facilities Management
2. **Introduction:** The Oakland University *Physical Master Plan*, *Comprehensive Parking Study*, and *Transportation Assessment and Plan* all address the need to expand parking spaces on campus to meet campus needs due to student enrollment growth. Fall 2012 enrollment reached a record high of 19,740 students and over 2,100 full-time equivalent employees. On-campus parking spaces number approximately 8,800.

According to the *Physical Master Plan*:

"As student enrollment has continued to increase in recent years, without a commensurate increase in the number of main campus parking spaces, parking has become a serious campus concern."

The *Comprehensive Parking Study*:

"...recommends construction of a garage just south of the new Athletic Center (completed in 2002)... also recommends construction of a garage just south of the Science and Engineering Building."

The proposed new P-32 Parking Structure replaces the existing P-32 surface parking lot, southeast of the Science and Engineering Building. It has four levels and provides access from three directions. The Structure has approximately 1,240 spaces, with a net gain of approximately 930 spaces, due to the loss of the existing P-32 surface parking lot. See Attachment A for the proposed schematic design.

Based on a thorough review and evaluation by Facilities Management, Student Leadership and the Parking Committee, it is recommended that the University seek proposals for architectural, engineering, and construction management services (Professional Services) for the P-32 Parking Structure to be completed by Fall, 2014 with a total cost not to exceed \$22,831,000.

The project will be financed exclusively with proceeds from the sale of General Revenue Bonds.

Per the Board of Trustees' (Board) Contracting and Employment Appointment Authority Policy, "for any capital improvement project that has major aesthetic considerations, the Administration shall obtain Board approval of the schematic design." Board approval of the attached P-32 Parking Structure schematic design is requested.

Upon Board approval of the schematic design, the Administration will proceed to seek proposals for Professional Services for this project and seek further Board approvals as required.

3. **Previous Board Action:** None.
4. **Budget Implications:** Beginning in FY2014, upon Board approval, debt service on the Parking Structure will be budgeted annually in the University General Fund budget.

Approval of Schematic Design  
for the P-32 Parking Structure  
Oakland University  
Board of Trustees Formal Session  
February 12, 2013  
Page 2

5. **Educational Implications:** This project supports the academic success of students by providing additional convenient parking near their classrooms and Library.

6. **Personnel Implications:** None.

7. **University Reviews/Approvals:** This recommendation was formulated by the Associate Vice President for Facilities Management, and reviewed by Student Leadership, the Parking Committee, Vice President for Finance and Administration, and President.


8. **Recommendation:**

RESOLVED, that the Board of Trustees approves the schematic design for the P-32 Parking Structure (Attachment A, as may be immaterially amended during continuing design and construction phases of the project) at a not to exceed cost of \$22,831,000; and, be it further


RESOLVED, that the Board of Trustees authorizes the Vice President for Finance and Administration to proceed with the completion of design of the P-32 Parking Structure, and perform all acts and deeds required by this resolution, consistent with the project scope and schematic design.

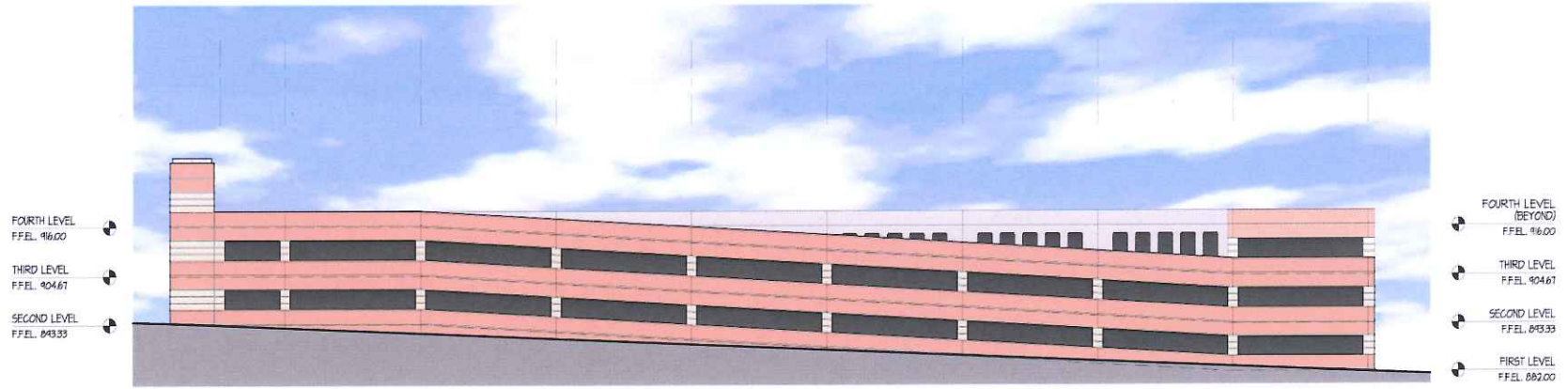
9. **Attachments:** A. Parking Structure Schematic Design

Submitted to the President  
on 2/6, 2013 by

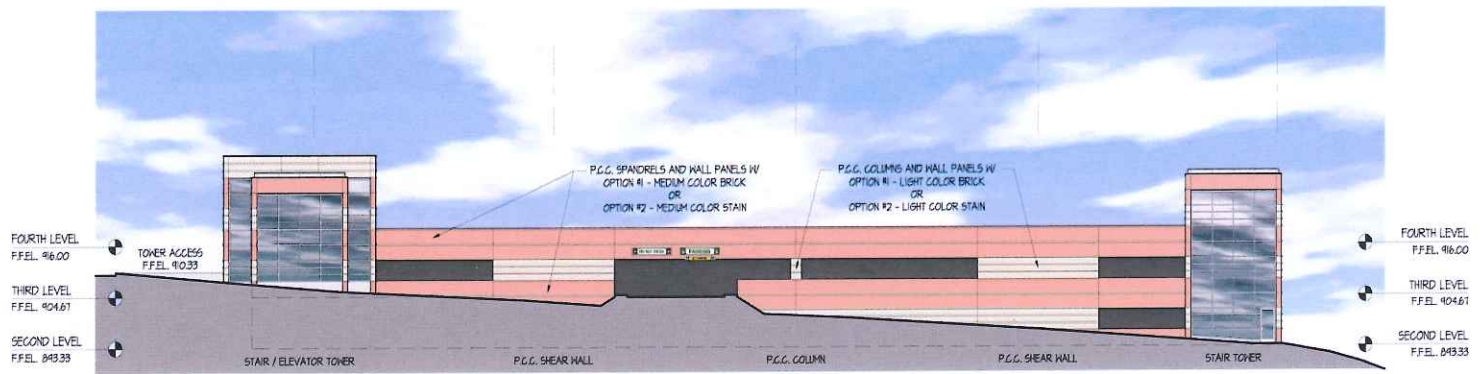
  
\_\_\_\_\_  
John W. Beaghan  
Vice President for Finance and Administration  
and Treasurer to the Board of Trustees

Recommended on 2/6, 2013  
to the Board for approval by

  
\_\_\_\_\_  
Gary D. Russi  
President



SOUTH ELEVATION



WEST ELEVATION



**OAKLAND  
UNIVERSITY  
PROPOSED  
SOUTH  
PARKING  
STRUCTURE**



Date	ISSUED FOR:	By

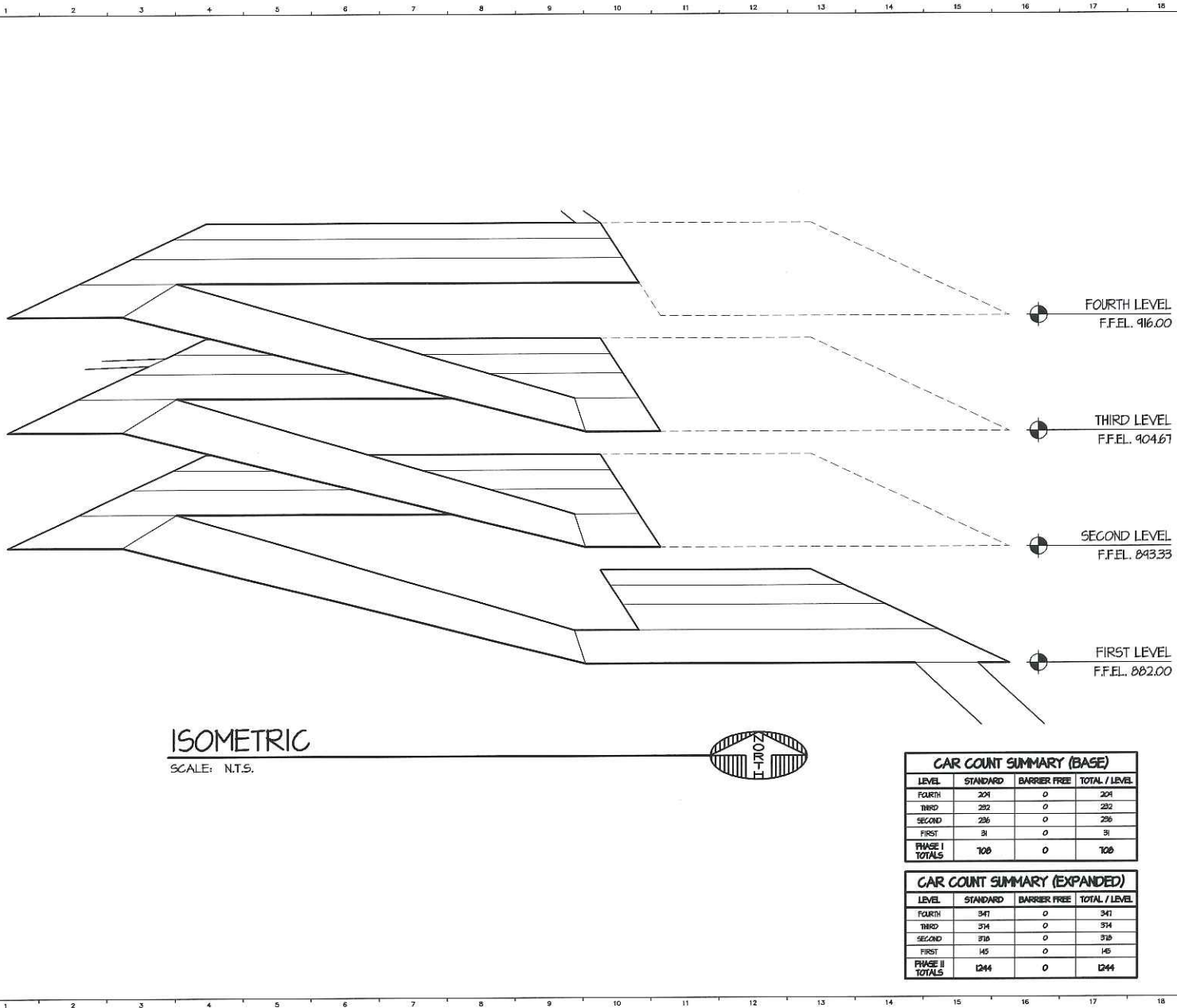
Sheet Title

**ISOMETRIC  
AND  
CAR COUNTS**

Drawn By	MSK	
Checked By		
File Name		
Plot Date		

File No		
Date	04/22/12	
Scale	AS NOTED	
Level		

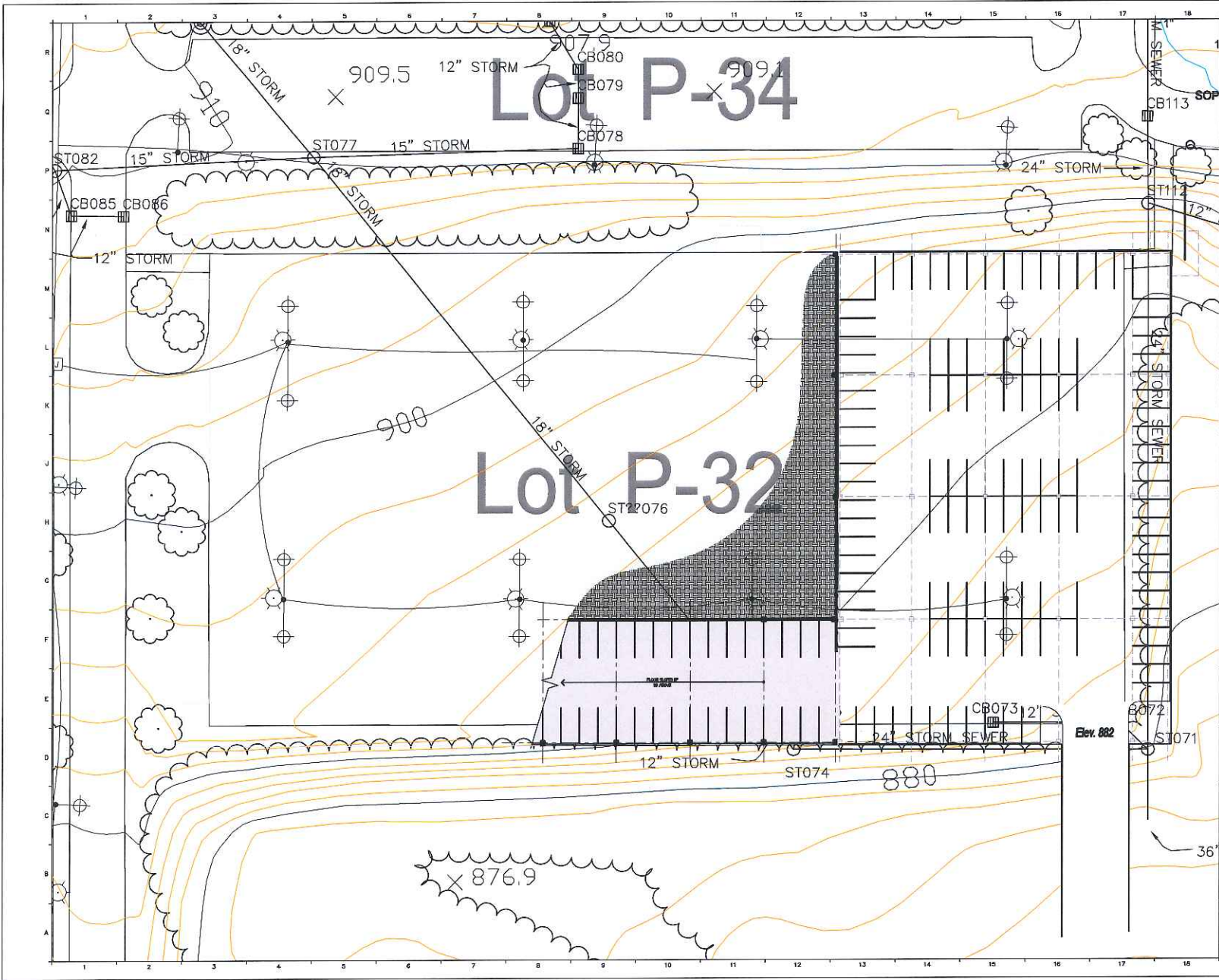
Sheet Number:  
**A-5**



**ISOMETRIC**  
SCALE: N.T.S.

CAR COUNT SUMMARY (BASE)			
LEVEL	STANDARD	BARRIER FREE	TOTAL / LEVEL
FOURTH	204	0	204
THIRD	292	0	292
SECOND	236	0	236
FIRST	31	0	31
<b>PHASE I TOTALS</b>	<b>763</b>	<b>0</b>	<b>763</b>

CAR COUNT SUMMARY (EXPANDED)			
LEVEL	STANDARD	BARRIER FREE	TOTAL / LEVEL
FOURTH	347	0	347
THIRD	314	0	314
SECOND	310	0	310
FIRST	145	0	145
<b>PHASE II TOTALS</b>	<b>1214</b>	<b>0</b>	<b>1214</b>





**OAKLAND UNIVERSITY  
PROPOSED  
SOUTH  
PARKING  
STRUCTURE**

 Parking Consultants  
Architects - Engineers  
Planners  
3000 Woodward Avenue, Suite 200  
Livonia, Michigan 48150  
Tel: 484.333.5222  
Fax: 484.333.3330  
E-mail: info@richassoc.com  
www.RichAssoc.com

Date	ISSUED FOR	By

Sheet Title  
**LEVEL 1  
FLOOR  
PLAN**

Drawn By: <b>RBC</b>	
Checked By:	
Plot Date:	
File No:	
Date: 03/03/03	
Scale: AS NOTED	
Last Rev:	

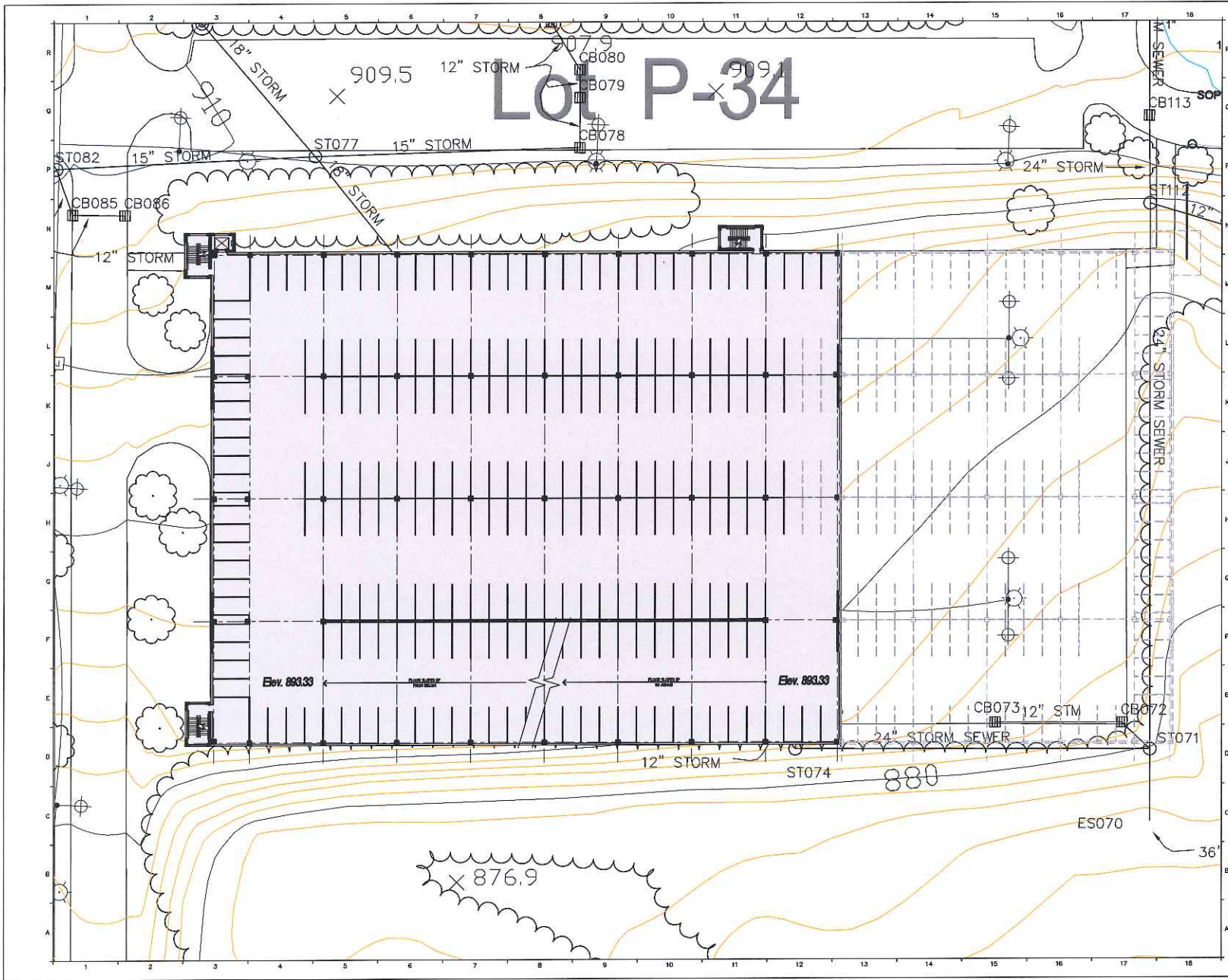
Sheet Number  
**A-1**



# Lot P-34

**OAKLAND UNIVERSITY  
PROPOSED  
SOUTH  
PARKING  
STRUCTURE**

**Rich**  
Parking Consultants  
Architects - Engineers  
Planners  
8402 Westpark Drive, Suite 100  
Westland, Michigan 48186  
Tel: 313.513.5000  
Fax: 313.513.5001  
www.richinc.com

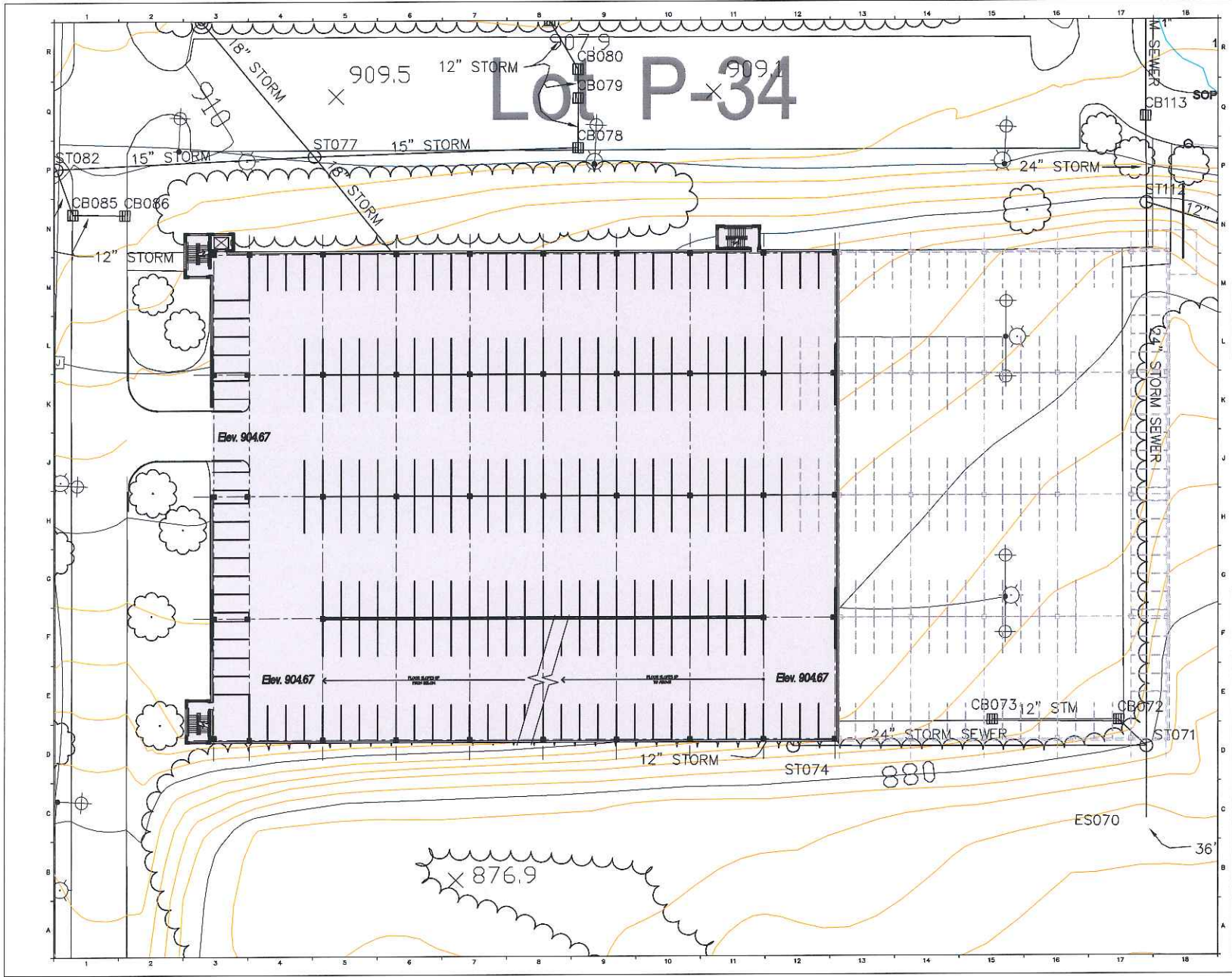


Date	ISSUED FOR	By

**LEVEL 2  
FLOOR  
PLAN**

Drawn By	BDK	
Checked By		
Plot Date		
File No.		
Date	6/13/13	
Scale	AS NOTED	
Last Rev.		

Sheet Number:  
**A-2**



**OAKLAND UNIVERSITY  
PROPOSED  
SOUTH  
PARKING  
STRUCTURE**

**RICH**  
A ASSOCIATES  
Parking Consultants  
Architects - Engineers  
Planners  
1000 University Ave., Suite 200  
Ann Arbor, MI 48106  
Tel: 734.263.5833  
Fax: 734.263.5833  
www.RichAssoc.com

Date	ISSUED FOR	By

**LEVEL 3  
FLOOR  
PLAN**

Drawn By: **IBK**  
 Checked By: **IBK**  
 File Name:   
 Plot Date:

File No:   
 Date: **03/03**  
 Scale: **AS NOTED**  
 Last Rev:

Sheet Number: **A-3**



