

**APPROVAL OF SCHEMATIC DESIGN
FOR THE FACILITIES MANAGEMENT BUILDING**

A Recommendation

1. **Division and Department:** Finance and Administration, Facilities Management
2. **Introduction:** The current Facilities Management Facility (Facility), three construction trailers, was built in 1987. The facility condition analysis submitted to the State of Michigan as part of the mandated annual Five-Year Capital Outlay Plan rates the Facility as "Needing Complete Replacement". The conditions impacting this rating include deterioration of the foundation, and inability to adequately control heating and cooling.

In addition to the physical condition of the Facility, it provides inadequate space for capital project management and storage of Oakland University historical archives (e.g. building plans, project renderings, etc.). There is limited meeting space requiring project planning meetings to be scheduled at other campus facilities or off campus locations. Currently, single offices are shared by multiple staff and staff are occupying spaces not originally designed for office use. These spaces do not meet minimum University standards in terms of work environment, lighting, and square footage. The ancillary structure adjacent to the main Facility does not have restrooms, washroom facilities, meeting space or storage.

See Attachment A for the proposed schematic design.

Based on a thorough review and evaluation by Facilities Management and Student Leadership, it is recommended that the University seek proposals for architectural, engineering, and construction management services (Professional Services) for the Facilities Management Building to be completed by Fall, 2014 with a total cost not to exceed \$1,750,000.

The project will be financed exclusively with proceeds from the sale of General Revenue Bonds.

Per the Board of Trustees' (Board) Contracting and Employment Appointment Authority Policy "for any capital improvement project that has major aesthetic considerations, the Administration shall obtain Board approval of the schematic design." Board approval of the attached Facilities Management Building schematic design is requested.

Upon Board approval of the schematic design, the Administration will proceed to seek proposals for Professional Services for this project and seek further Board approvals as required.

3. **Previous Board Action:** None.
4. **Budget Implications:** Beginning in FY2014, upon Board approval, debt service on the Facilities Management Building will be budgeted annually in the University General Fund budget.
5. **Educational Implications:** None.
6. **Personnel Implications:** None.

**Approval of Schematic Design
for the Facilities Management Building
Oakland University
Board of Trustees Formal Session
February 12, 2013
Page 2**

7. **University Reviews/Approvals:** This recommendation was formulated by the Associate Vice President for Facilities Management, and reviewed by Student Leadership, the Vice President for Finance and Administration, and President.

8. **Recommendation:**

RESOLVED, that the Board of Trustees approves the schematic design for the Facilities Management Building (Attachment A, as may be immaterially amended during continuing design and construction phases of the project) at a not to exceed cost of \$1,750,000; and, be it further

RESOLVED, that the Board of Trustees authorizes the Vice President for Finance and Administration to proceed with the completion of design of the Facilities Management Building, and perform all acts and deeds required by this resolution, consistent with the project scope and schematic design.

9. **Attachments:** A. Facilities Management Building Schematic Design

Submitted to the President
on 2/7, 2013 by



John W. Beaghan
Vice President for Finance and Administration
and Treasurer to the Board of Trustees

Recommended on 2/7, 2013
to the Board for approval by



Gary D. Russi
President



HOBBS + BLACK ARCHITECTS

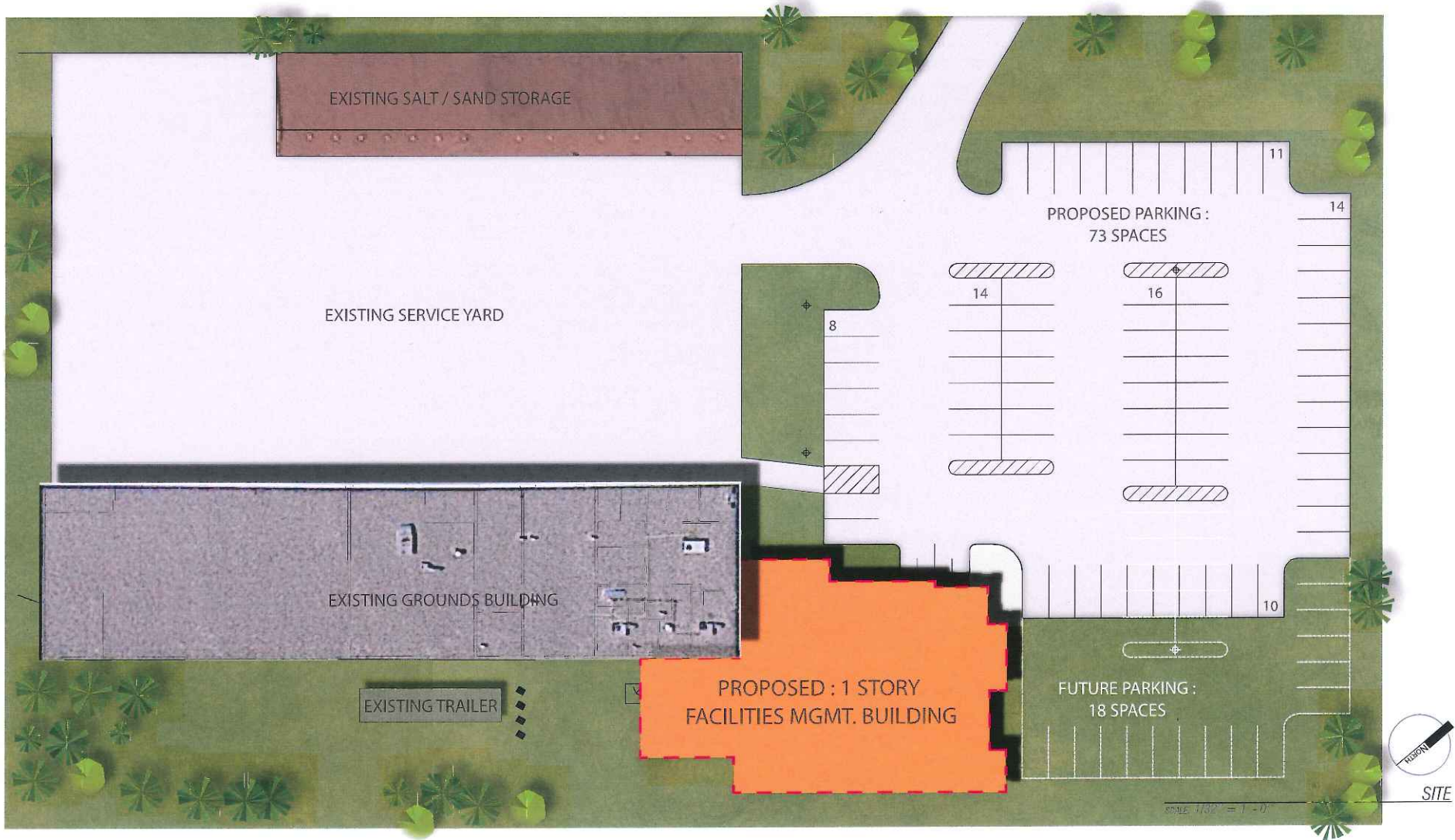
© 2013 Hobbs + Black Architects, Inc. DATE PRINTED: 01/15/13 FILE NAME: P:\2010\10720\Drawings\Site\20121220 - IMAGE\20130109 - DESIGN OPTIMIZED.DWG

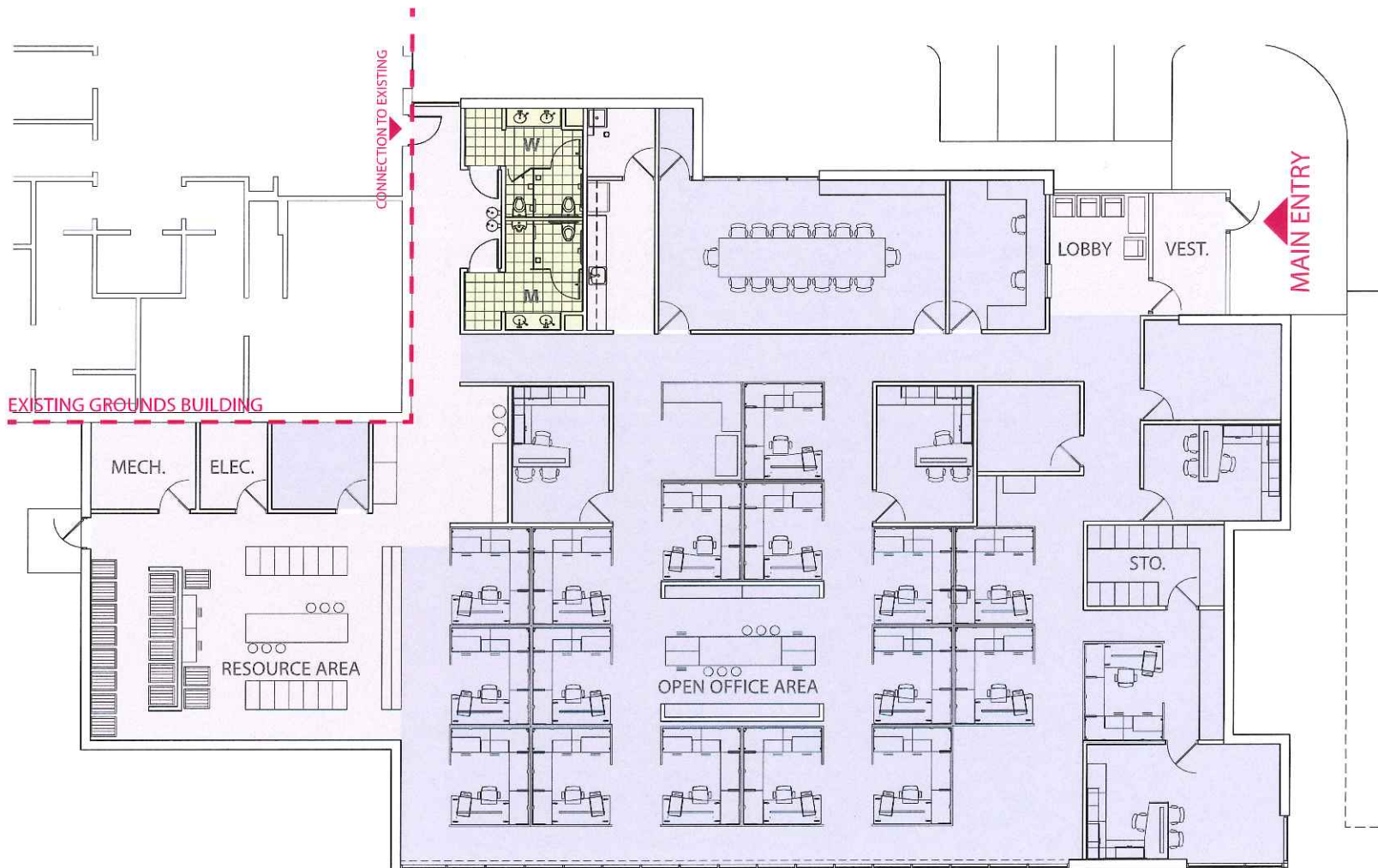
DATE: JANUARY 9TH, 2013

OAKLAND UNIVERSITY FACILITIES MGMT

ROCHESTER, MICHIGAN

10-720





PLAN

SCALE: 3/32" = 1' - 0"