

Department of Psychology
Oakland University
Graduate Education in Psychology leading to the
degrees of
M.S. in Psychology
Ph.D. in Psychology

Our graduate programs provide students with the knowledge, skills, and experiences necessary to become successful consumers and producers of psychological science. Psychology is a broad discipline that interfaces with the biological and social sciences and our program is organized around five concentrations that demonstrate the breadth of psychological science: (1) Evolutionary and Comparative Psychology; (2) Social-Personality Psychology; (3) Behavioral Health Psychology; (4) Developmental Psychology; and (5) Cognition, Perception, and Biological Psychology. Students seeking either the MS degree or the Ph.D. will select one of these concentration areas. The MS degree is intended to help students achieve either of two goals: (1) successful admission into and completion of a Ph.D. program in psychology or (2) acquisition of the advanced research skills and knowledge of psychological science necessary for successful participation and advancement in an array of career paths across multiple market sectors. The Ph.D. degree is intended to prepare students for a position in academia in which they will conduct and publish original research in addition to teaching and training the next generation of students.

For additional information concerning these
programs, please visit
<http://www.oakland.edu/psychology/grad/>

The Evolution of
Psychopathology Conference
is funded by:

Oakland University

Office of the President

Office of the Senior Vice President for Academic
Affairs and Provost

Office of the Vice Provost for Research

College of Arts and Sciences

Honors College

Center for Biomedical Research

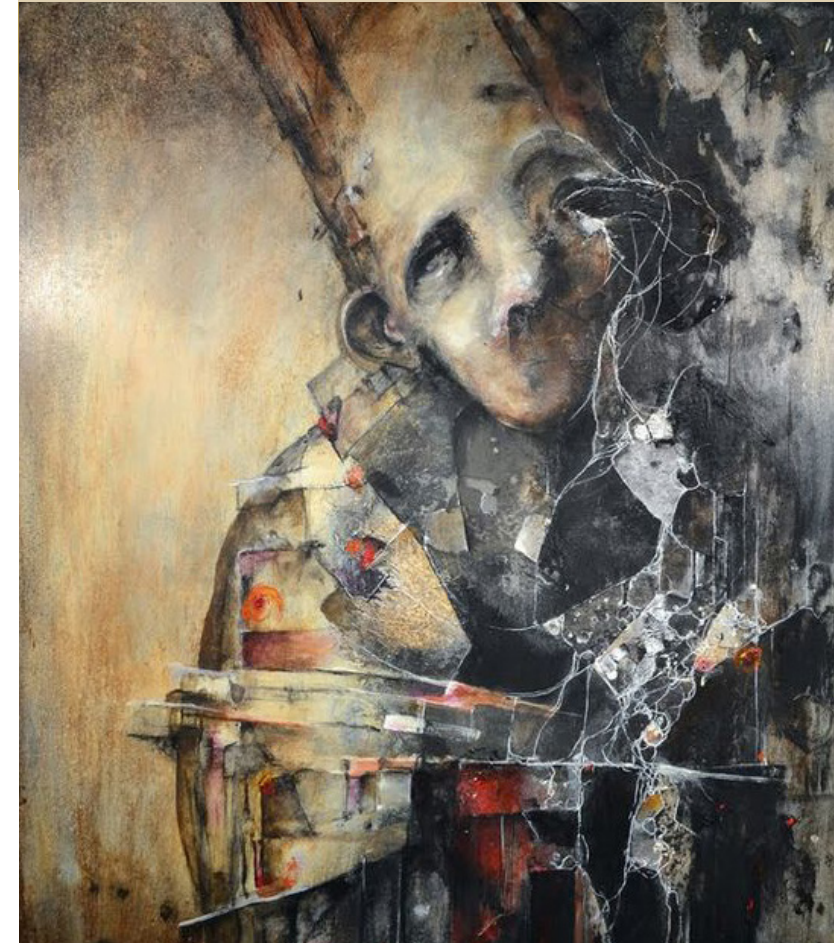
Corporate Partner

Springer Science+Business Media



Verso: Eric Lacombe: webpage (<http://www.ericlacombe.com/>)

THE EVOLUTION of PSYCHOPATHOLOGY



Hosted by the
Oakland University
Department of Psychology

APRIL 18-19, 2016

*The goal of the conference is to enrich our understanding
of psychopathology; an additional objective is to
recognize the importance of and encourage engagement in
interdisciplinary collaboration.*

Monday, April 18-19, 2016: Evolution of Psychopathology Conference – Meadow Brook Hall, Oakland University

Conference Agenda

Monday, APRIL 18, 2016

5:30 – 6:30 Reception

Poster Session (Graduate Students, Department of Psychology, Oakland University)

Opening Remarks

Kevin J. Corcoran
Dean, College of Arts and Sciences, Oakland University

6:30 – 9:00 Dinner

Keynote Address

Randy Nesse
(Arizona State University, Center for Evolution and Medicine)

Tuesday, APRIL 19, 2016

8:00 – 8:30 Continental Breakfast

8:30 – 12:00 Morning Session (30 minutes per panelist: 20 minute talk, 10 minute Q&A from panel and audience)

Opening Remarks

James P. Lentini
Senior Vice President for Academic Affairs and Provost, Oakland University

George W. Hynd
President, Oakland University

Martin Brüne
(Psychiatry & Neuroscience, LWL University Hospital, Ruhr University Bochum, Germany)

Rebecca Sear
(Population Health, London School of Hygiene & Tropical Medicine, UK)

Jerome Wakefield
(Social Work, New York University)

Sarah Perry
(Independent scholar, non-fiction writer, USA)

Leif Edward Ottesen Kennair
(Psychology, Norwegian University of Science & Technology, Norway)

Randy Thornhill
(Department of Biology, University of New Mexico)

12:00 – 1:30 Lunch

1:30 – 4:30 Afternoon Session (30 minutes per panelist: 20 minute talk, 10 minute Q&A from panel and audience)

David Buss
(Department of Psychology, University of Texas at Austin)

Hope Ferdowsian
(Medicine, George Washington University; Medicine, Georgetown University)
Jan Smitowicz
(Independent scholar, novelist, USA)

Brian Boutwell
(Criminology & Criminal Justice; Saint Louis University)

Colin Feltham
(Counseling, Sheffield Hallam University, UK)

Randy Nesse
(Center for Evolution & Medicine, Arizona State University)

5:00 – 6:00 Reception
Poster Session (Graduate Students, Department of Psychology, Oakland University)

6:00 – 9:00 Dinner
Roundtable remarks: Reflections and perspectives on the evolution of psychopathology: Future research and theory (5 minutes per panelist)

Discussants and Participants

Paul Andrews
(Department of Psychology, Neuroscience & Behaviour, McMaster University, Canada)

David Bjorklund
(Department of Psychology, Florida Atlantic University)

Sarah Brosnan
(Departments of Psychology and Philosophy; Georgia State University)

Kingsley Browne
(School of Law, Wayne State University)

Lance Bush
(Department of Psychology, Cornell University)

Joseph Cesario
(Department of Psychology, Michigan State University)

Hilda Costa
(Department of Psychology Federal University of Ceará, Brazil)

Marco Del Giudice
(Department of Psychology, University of New Mexico)

Patrick Forber
(Department of Philosophy, Tufts University)

Elizabeth Hill
(Department of Psychology, University of Detroit-Mercy)

Jon Maner
(Department of Management & Organizations, Northwestern University)

David Marcus
(Department of Psychology, Washington State University)

William McKibbin
(Department of Psychology, University of Michigan-Flint)

David Navarrete
(Department of Psychology, Michigan State University)

Sharon Panulla
(Springer Science+Business Media)

Mike Ponder
(Applied Social Research Evaluation, Oregon Program Evaluators Network)

Catherine Salmon
(Department of Psychology, University of Redlands)

Rory Smead
(Department of Philosophy, Northeastern University)

Steve Stewart-Williams
(Department of Psychology, Nottingham University-Malaysia, Malaysia)

Doug VanderLaan
(Department of Psychology, University of Toronto, Canada)

Poster Presentations by Oakland University Graduate Students in Psychology

Insecure romantic attachment dimensions and frequency of mate retention behaviors
Nicole Barbaro, Michael N. Pham, Todd K. Shackelford, & Virgil Zeigler-Hill

Compassion versus strength: Cultural disparities in the perception of personal growth
Whitney Dominick, Jessica Genaw, & Kanako Taku

Mate-guarding and preferences for self-resemblance across the menstrual cycle in women and their male partners
Sarah H. Donaldson & Lisa L.M. Welling

Mate retention and conflict
Christopher J. Holden & Virgil Zeigler-Hill

Striped skunks can respond to visual patterns without functional cues to solve an arbitrary slat-pulling task
Zoe Johnson-Ulrich, Jennifer Vonk, & Eric Hoffmaster

Perceptions of attractiveness vary with ascribed values
Guilherme S. Lopes, Walberto S. Santos, Todd K. Shackelford, Adam E. Tratner, & Valdiney V. Gouveia

The relative importance of sexual dimorphism, fluctuating asymmetry, and color cues to health during evaluation of potential partners' facial photographs: A conjoint analysis study
Justin Mogilski & Lisa Welling

Mate value of self and partner, perceived risk of infidelity, women's personality, and mate retention
Yael Sela, Nicole Barbaro, Todd K. Shackelford, & Virgil Zeigler-Hill

Development and initial psychometric assessment of the Childhood Religious Experiences Inventory – Peers Version
Adam E. Tratner, Yael Sela, Alyse Ehrke, Guilherme S. Lopes, & Viviana A. Weekes-Shackelford

Diurnal variation in women's face preferences
Anna Wysocki, Lisa Welling, Benedict Jones, Lisa DeBruine, David Perrett, & Anthony Little