



in purpose *for Health*

Kevin Arthur Ball

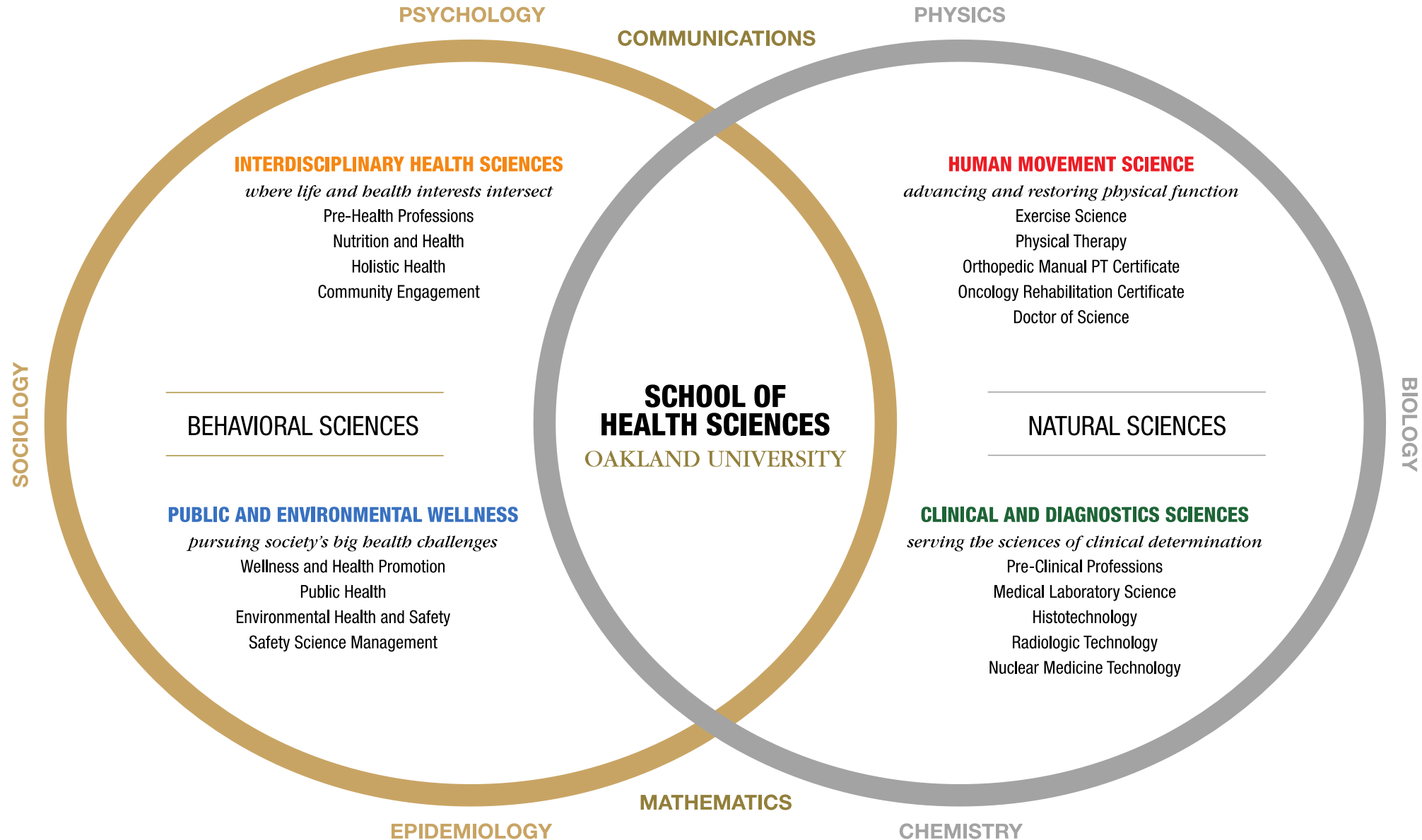
August 2018

Nursing

Health

Medicine

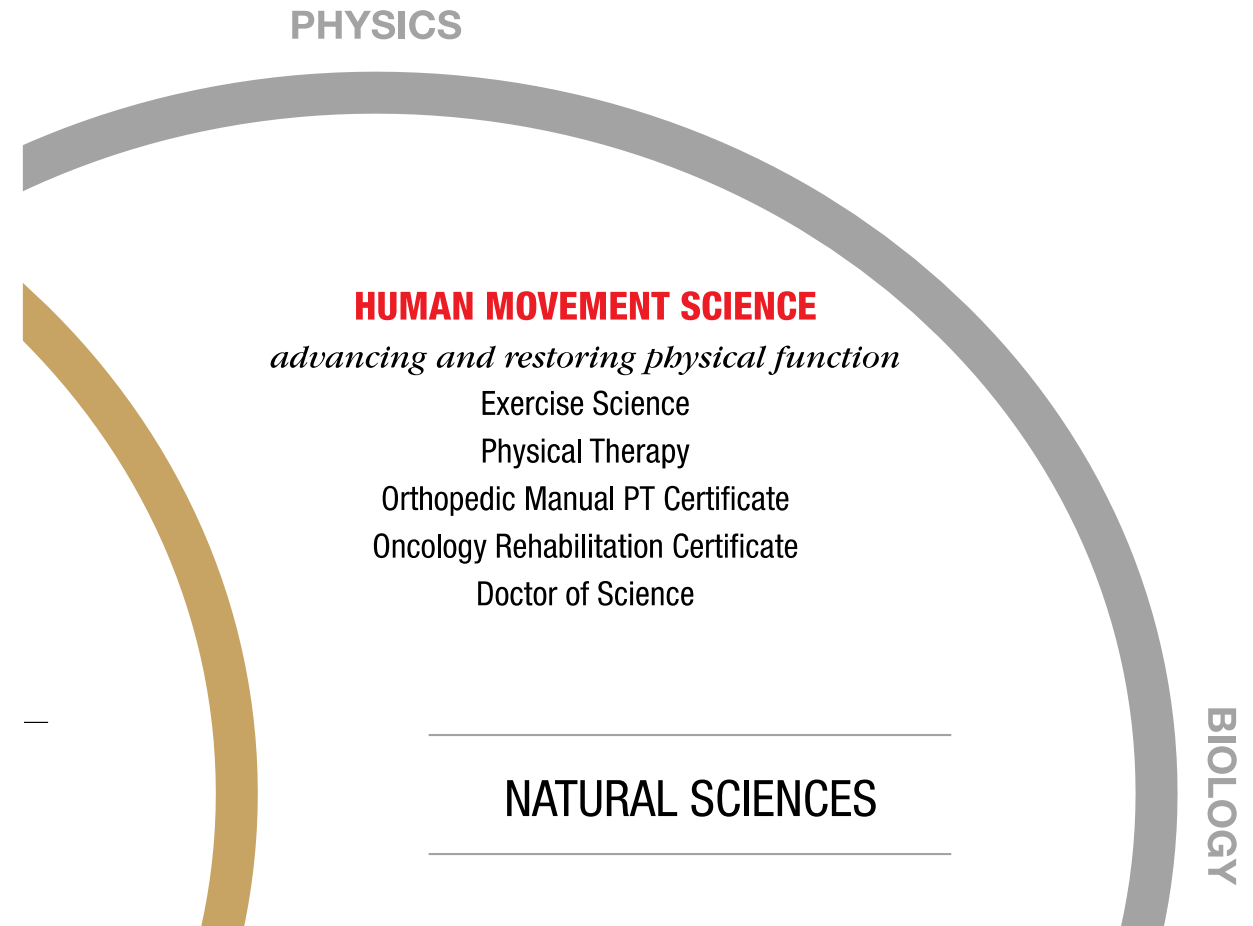
Built upon the foundations of the natural and behavioral sciences, the School of Health Sciences transforms students into leaders, connects theory to best practices, and impacts the needs of communities
in purpose *for Health*



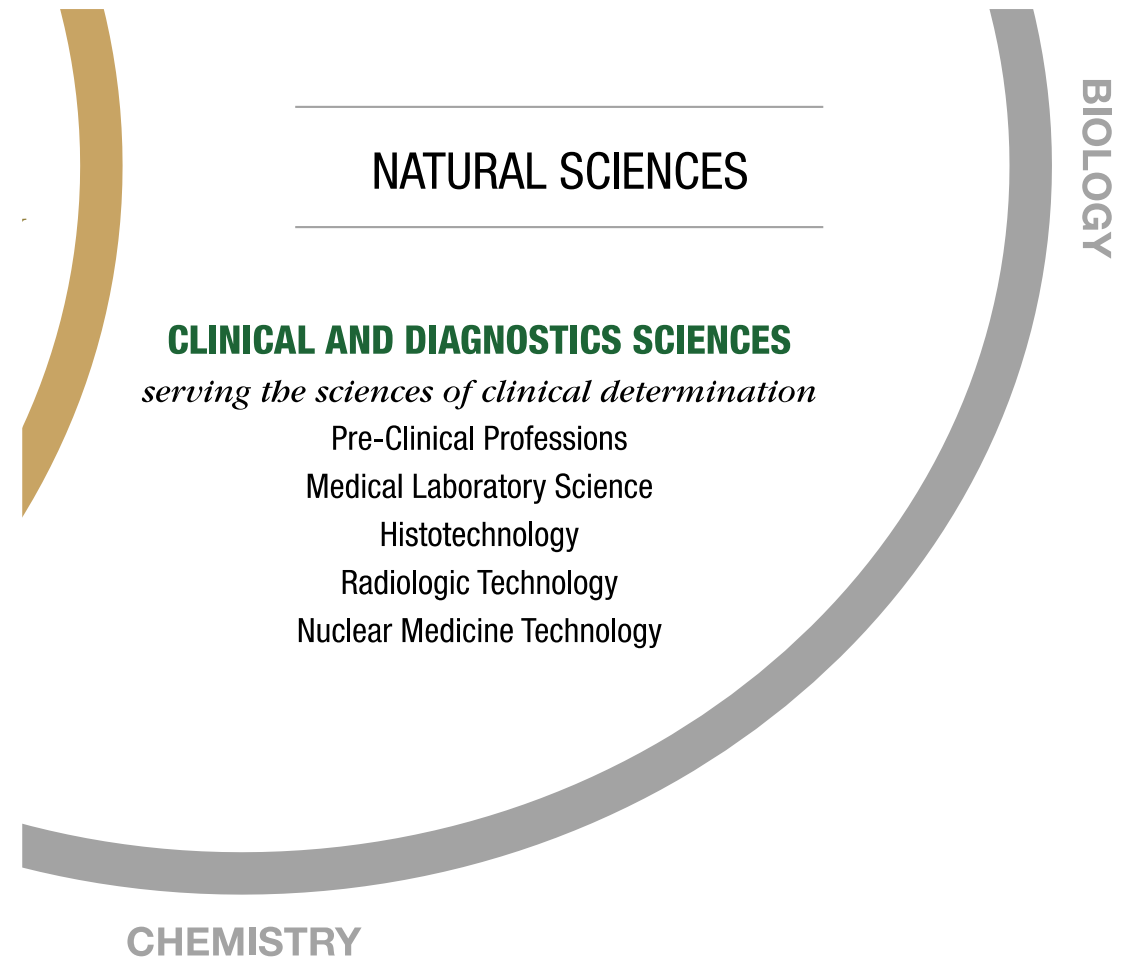


- 99.1% Graduating class placement
- Of which, 56% successfully placed into graduate and continuing professional education
- Rigorous nationally accredited programs
- Efficiency and effectiveness
 - Middle sized School by credit hours
 - smallest budget of all Schools
 - 85% 1st year retention

- Strong Doctoral and Professional programs in Physical Therapy
- 45 years of Master of Science leadership in Exercise Science
- Launching new Exercise Science undergraduate major in 2019



- Clinical experiential learning
- 40 years of expertise Bachelor's entry into certified health careers
- Growth opportunities in graduate and professional education



SOCIOLOGY

BEHAVIORAL SCIENCES

PUBLIC AND ENVIRONMENTAL WELLNESS

pursuing society's big health challenges

Wellness and Health Promotion

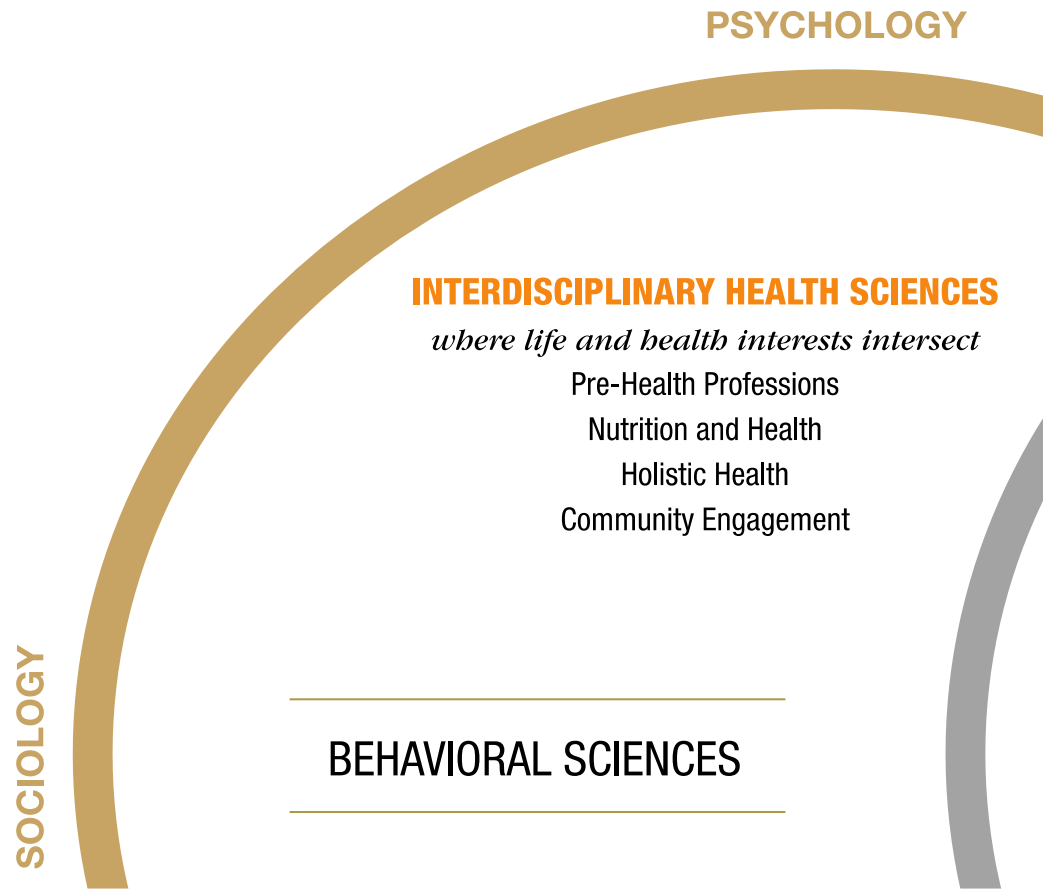
Public Health

Environmental Health and Safety

Safety Science Management

EPIDEMIOLOGY

- Comprehensive expertise in Public Health, Wellness, and Safety
- Community engaged experiential learning
- Policy - Assessment - Action



- Deep commitment to community service and leadership
- Diverse, inclusive, multidisciplinary, collaborative, interdisciplinary
- Nutrition / Dietetics opportunities

ECLIPSE

DEDICATED ■ EXPERIENTIAL ■ DETERMINED

Explore the core competencies of your future profession and
how to collaborate across professional boundaries.

For School of Health Sciences students, ECLIPSE connects your academic
and extracurricular experiences to leadership in clinical, community
and industrial health-related fields.



Engage in relevant professional activities in small group sessions throughout your college career. Learn teamwork, roles and responsibilities, the importance of values, and effective communication skills. Develop skills to include in your interprofessional leadership portfolio. Discover your leadership traits with self-assessment and -reflection in purpose *for Health*

oakland.edu/shs/eclipse

School of Health Sciences BOARD

Board Of Advocacy and Resource Development



Michael Antaran
Entrepreneur - Carrot



Bob Jarski
Professor Emeritus



Reyna Columbo
Dir Beaumont Troy Rehab Serv



Greg Jordan
Dir OU Rec and Well



Tom Spring
Dir HAP Health and Wellness



Margaret Dimond
CEO McLaren Hospital



Joel Kahn
Cardiologist



Kathy Forzley
Dir Oakland County Health



Ewa Matuszewski
CEO MedNetOne



Rheanne Suszek
Exec Dir Oakland YMCA



Teresa Stayer
CEO SpectraMed Inc



Art Griggs
Past Assistant Dean / Provost



Telva McGruder
Dir GM Global Facilities Engin



Darryl Hill
VP Safety FirstGroup America



Moon J Pak
Physician, SHS Founder



John Waugh
VP Henry Ford Health



Tom Tange
City Manager Auburn Hills



in purpose *for Health*

Kevin Arthur Ball

August 2018