



The rumors of our demise are greatly exaggerated

...reality is, we're on fire!



**REAL PROGRAMS FOR  
REAL PEOPLE**

**IN REAL SCHOOLS,  
ORGANIZATIONS AND  
COMMUNITIES**

**OAKLAND  
UNIVERSITY™**



School of Education and Human Services



**63** FULL  
TIME  
**FACULTY  
MEMBERS**



**74** PART  
TIME  
**FACULTY  
MEMBERS**




**1,206**  
**UNDERGRADUATE  
STUDENTS**



**1,387**  
**GRADUATE  
STUDENTS**



**131**  
**STAFF**



**30,000**  
**SEHS ALUMNI**  
(1/3 OF OU'S TOTAL ALUMNI)

**1ST PH.D.**  
**ON CAMPUS**  
**THROUGH RLA**

**24** **SUPER-**  
**INTENDENTS**  
**WITH OU**  
**DEGREES IN THE**  
**SURROUNDING AREA**

**27%**  
**OF MICHIGAN'S**  
**READING SPECIALISTS**  
**ENDORSEMENTS**  
**MORE THAN TOP 2ND**  
**AND 3RD COMBINED**

**215**  
**PH.D.S PRODUCED**  
**THROUGH SEHS**

**1ST** **PROGRAM TO**  
**RECOMMEND**  
**TEACHER**  
**CERTIFICATION**  
**AT HIGHEST LEVEL OF**  
**TEACHER LEADERSHIP**

**151** **CURRENT**  
**OU EMPLOYEES**  
**WITH SEHS**  
**DEGREES**

**APPROXIMATELY**  
**7,000** **HOURS OF**  
**NO-COST**  
**COUNSELING**  
**PROVIDED TO THE COMMUNITY**

# LET'S BEGIN WITH A TOUR OF PAWLEY HALL



**LOWRY**  
**CENTER FOR EARLY**  
**CHILDHOOD EDUCATION**



SEHS Educational Resources Lab  
**TRADEBOOK  
EXAMINATION CENTER**

# **EDUCATIONAL RESOURCES LAB**



# **STUDENT SERVICES**



**Advising  
Field Services  
Prof. Development**



# SEHS COUNSELING CENTER

OAKLAND  
UNIVERSITY



SEHS Counseling Center



**COUNSELING**



**SCHOOL OF  
EDUCATION  
AND HUMAN  
SERVICES**



**TEACHER  
DEVELOPMENT AND  
EDUCATIONAL STUDIES**



**HUMAN  
DEVELOPMENT  
AND CHILD STUDIES**



**READING  
AND LANGUAGE ARTS**



**PUBLIC  
SCHOOL  
ACADEMIES**



**ORGANIZATIONAL  
LEADERSHIP**



**OUTREACH  
AND PROGRAM  
SERVICES**

# EXEMPLARY PROGRAMS

(THINGS THAT ARE UNIQUE TO US)

MICRO-BUSINESS PROJECT

CENTER FOR AUTISM

PAWLEY LEAN INSTITUTE

ADULT CAREER COUNSELING CENTER

READING CLINIC

GALILEO INSTITUTE

SEHS COUNSELING CENTER

SOGI

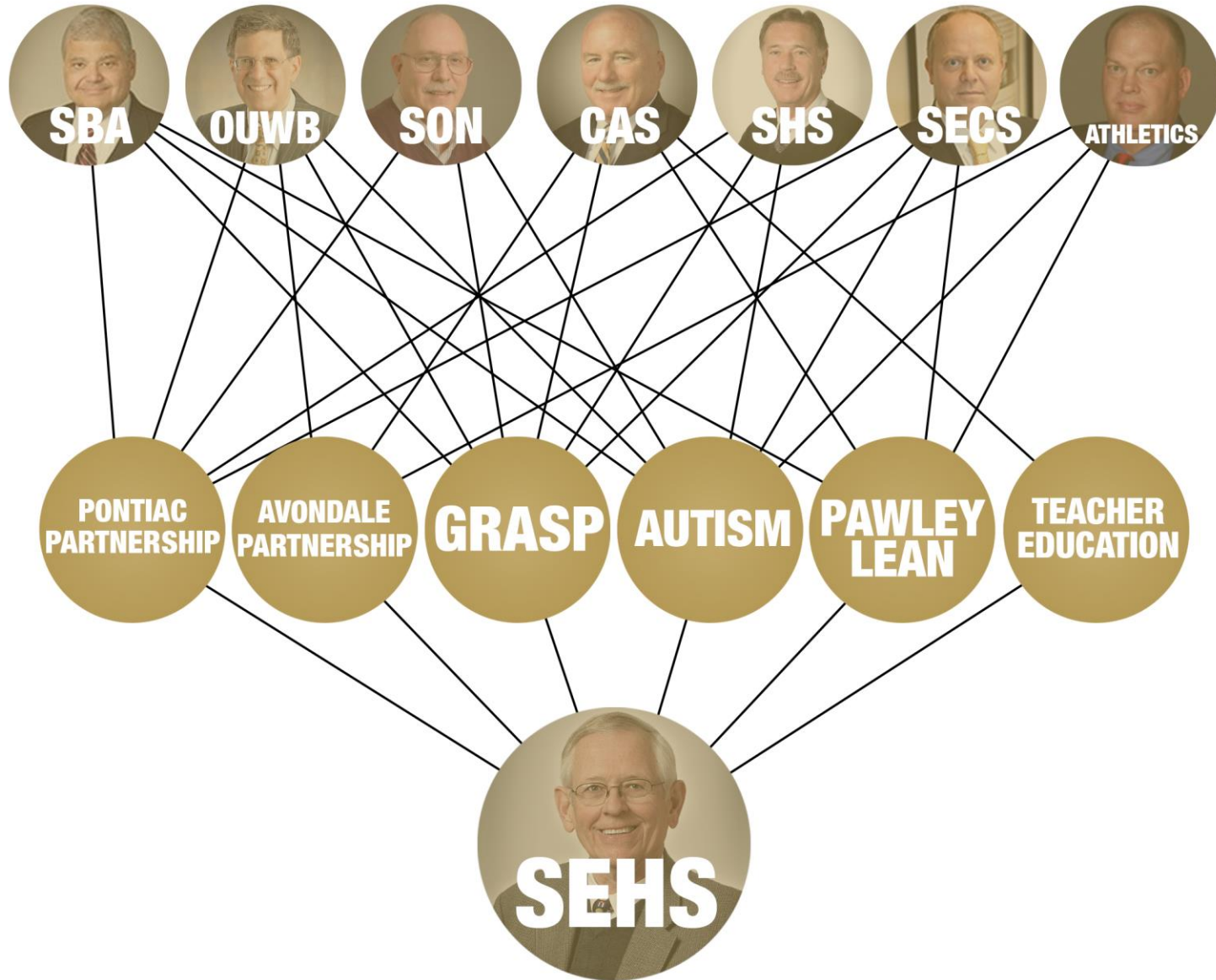
LOWRY  
(50TH ANNIVERSARY)

WRITING CLINIC

READING RECOVERY CENTER OF MICHIGAN



# SEHS AS THE CONNECTOR OF THE OU UNIVERSE





# **PARTNERSHIPS CONNECT US **BEYOND** THE CAMPUS**

**AVONDALE**

**BLOOMFIELD  
HILLS**

**BIRMINGHAM**

**PONTIAC**

**UTICA**

**WEST  
BLOOMFIELD**

**AND  
MANY  
MORE!**

# PARTNERSHIPS CONTINUED...

**JUDSON  
CENTER**

**BALDWIN  
CENTER**

**AUTISM  
ALLIANCE OF  
MICHIGAN**

**GALILEO  
TEACHER  
LEADERSHIP  
CONSORTIUM**

**LEAN  
CONSORTIUM**

**MEEMIC  
INSURANCE**



# ANOTHER KIND OF PARTNERSHIP: PUBLIC SCHOOL ACADEMIES

## PSA - by the numbers:

- **9** charter schools – three with high schools, five with preschools
- **84%** of students eligible for free and reduced lunch
- Students from **71** unique school districts
- **100%** college acceptance
- **20** years as an authorizer
- **6,700** students



# INNOVATIVE FACULTY RESEARCH

- 93+ conference presentations
- 90+ publications
  - Partnership research projects
    - Autism expanded Research
      - Faculty led seminars on research methods
      - Faculty committee on external funding
      - Funding research opportunity committee
      - Faculty research committees







# **INNOVATIVE FACULTY SERVICE**

- National boards
- Leadership roles in national organizations
- Teach to Lead
- Partnerships
- 9 SEHS members on strategic planning committee
- Journal editors

# INNOVATIVE TEACHING PRACTICES

- Putting theory to practice and practice to theory
  - Innovative teaching practices
    - Classes taught on site in our partnership schools
      - Reading Recovery Center of Michigan
      - Authors and Illustrators
      - Reading and Writing clinics
        - Practicum Experience
        - Lean Workouts
        - Counseling Center
        - HRD internships
        - ABA clinic
        - Lowry

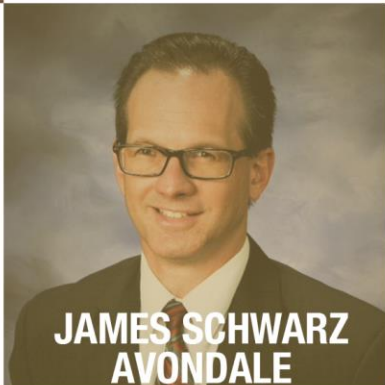
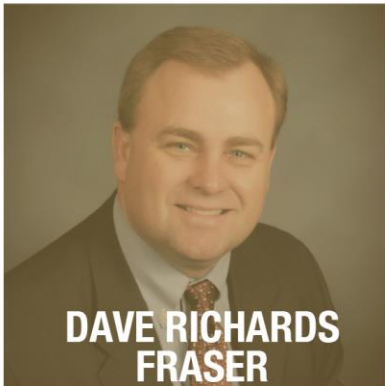
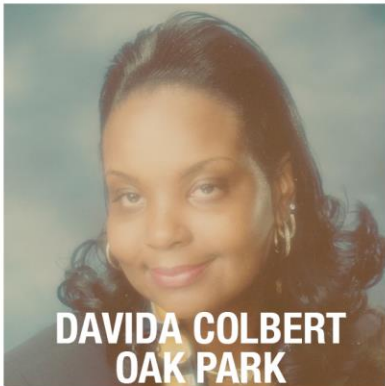




## ALUMNI

- **24** superintendents with OU degrees in area
- **151** current employees with OU degrees
- SEHS has 2nd largest alumni base (over **26,000**)
  - Over **30,000** (including double degrees)
- SEHS **2nd** largest contributor in '14-15 AUFD campaign
- Of top retired donor base, SEHS has **4** of the **5**

# OTHER SEHS PH.D. SUPERINTENDENTS



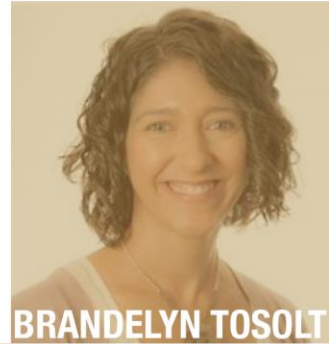
# ALUMNI CONTINUED



**BRIAN PETERSON**



**JANE OWEN**



**BRANDELYN TOSOLT**



**TERRY BLACKHAWK**



**DENNIS PAWLEY**



**PATRICK FAIRCLOTH**

A woman with dreadlocks and a large orange earring is smiling and looking towards the right. In the background, several other people are visible, some looking towards the right. On the right side of the image, a man with glasses, wearing a light-colored shirt and a patterned tie, is speaking at a podium with a microphone. He is gesturing with his hands.

## RECLAIMING THE EDUCATIONAL AGENDA

- Educators rising
- Redesign of Secondary and Elementary Education
- Teacher Leadership
- Why Teach initiative (“are you nuts?”)

National Recognition or “prominence”

- Teach to Lead
- AERA
- Michigan Art Education Association (MAEA)



## LOOKING TO THE FUTURE

- Increased partnerships
- Expanded professional development services
- New design of Elementary Education
- Increased global initiatives – building upon our long-term Chinese partnerships (60 Chinese alumni)
- New Ed.D. program
- Continued development of the Center for Autism, including an ABA clinic
- Strategic plan aligned with OU plan

**YES, WE HAVE  
CHALLENGES, BUT OUR  
FUTURE IS BRIGHT.**

**WE LOOK FORWARD  
TO WELCOMING  
JON MARGERUM-LEYS, PH.D.  
AS OUR NEW DEAN.**





